

2.2 Standard Installation Procedure for Microsoft Windows Systems (ME, XP, 2000, 98, 95, NT)

In order to proceed with the Osprey installation for Windows, you must first download a copy of Osprey. If you have not yet obtained a copy, see section [2.1 Obtaining Osprey](#) for more details. Once you have a copy of the Osprey installer (osprey.exe) you are ready to continue.

The Osprey installation is very simple and easy. Installation is completely free, and will take less than 5 minutes to complete. To proceed with installation, follow these steps:

1) Before installation you must extract, using WinZip (<http://www.winzip.com/>), the executable from the "osprey.zip" file obtained after downloading Osprey. To begin the installation, start by double-clicking the Osprey Installer (osprey.exe) and wait while Osprey initializes some packages required for installation.



Figure 2.2 - 1: The Osprey Installer Icon

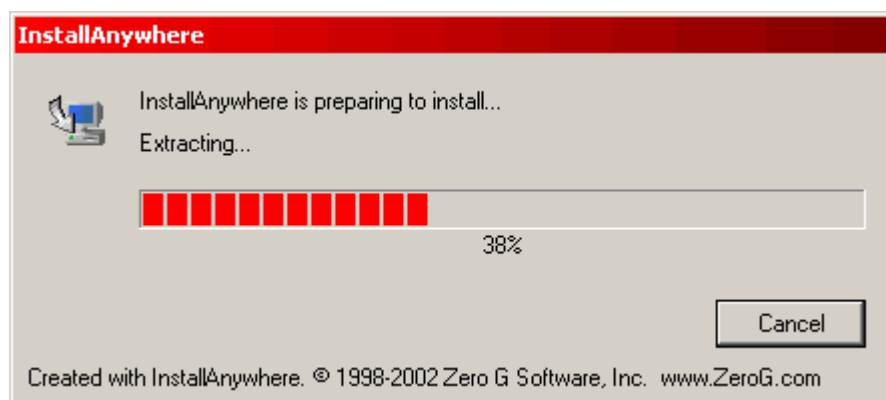
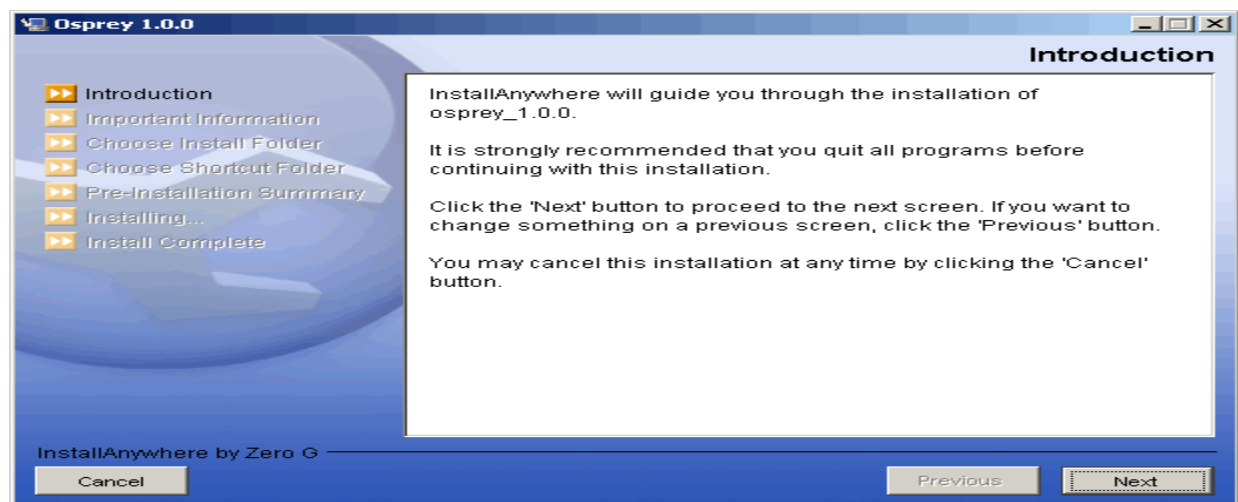


Figure 2.2 - 2: Osprey initializing packages before proceeding with installation

2) Once the Osprey installer has launched, you will be asked a series of questions about your installation. Firstly, you are presented with an introduction to the install procedure. Please read this carefully, and click "NEXT" to proceed.



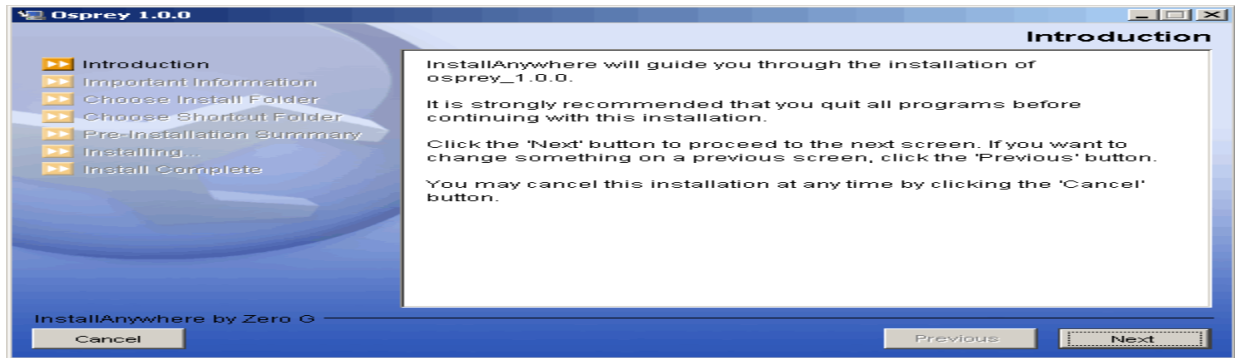


Figure 2.2 - 3: Osprey installation introduction

3) Next, you will be presented with the Osprey Network Visualization System User Agreement. Please read this carefully. By clicking "NEXT" you will agree to these terms and conditions. If you do not agree to the terms and conditions, simply click "CANCEL" at any time to abort the Osprey installation. If you agree, click the "NEXT" button to continue.

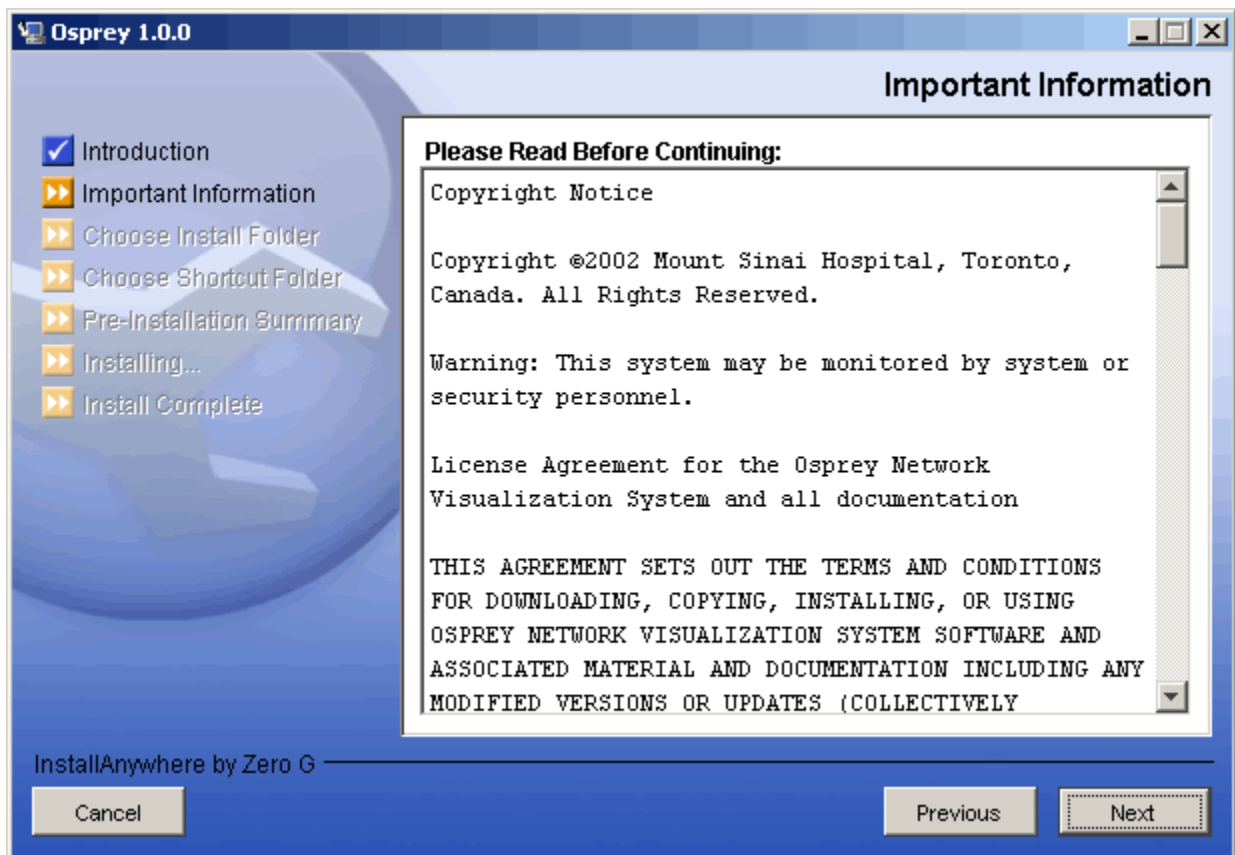
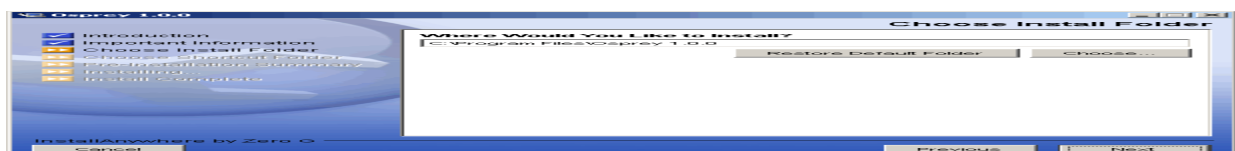


Figure 2.2 - 4: Osprey Network Visualization System User Agreement

4) On the next screen, you will be asked about the installation folder for Osprey. By default, Osprey uses C:\Program Files\osprey_1.0.0 as an installation directory. If you would like to install in a different directory, select the new folder from this page. If you are happy with the default installation folder, click "NEXT" to continue.



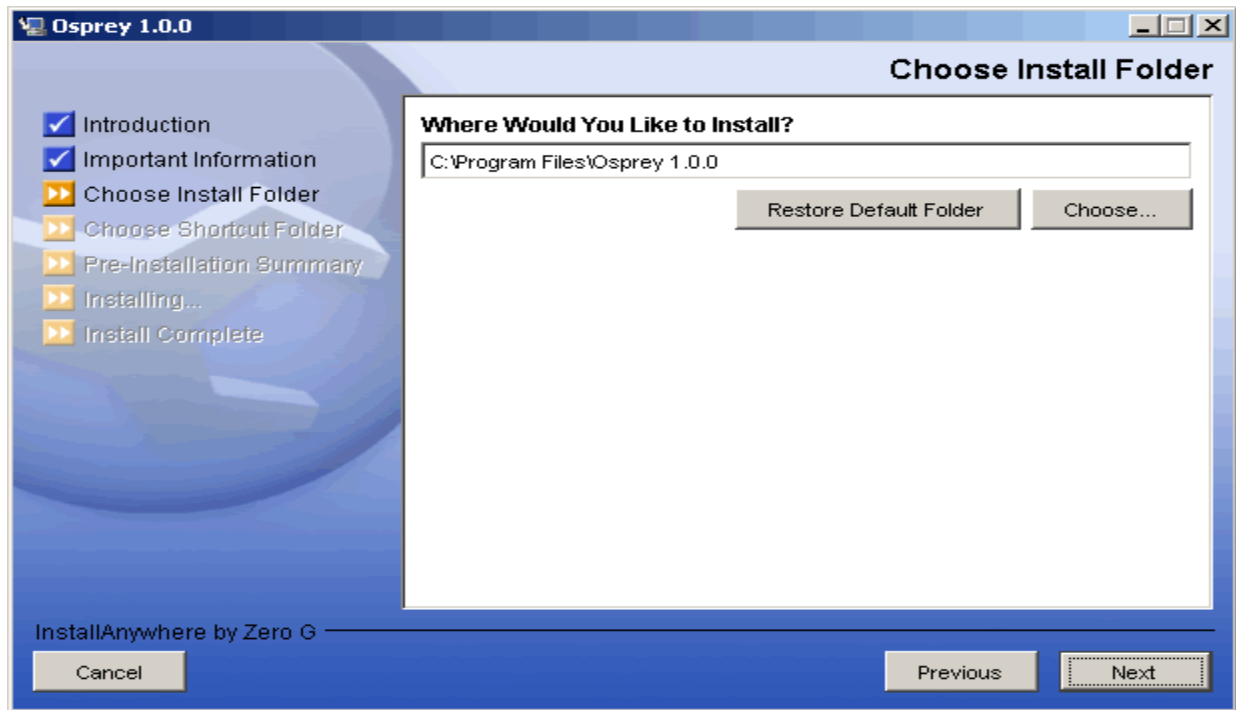


Figure 2.2 - 5: The Osprey Installation Choose Install Folder page

5) On the following screen, you will be presented with several options for installing Osprey shortcuts. By default, Osprey will install shortcuts into the start menu (program group) for you to access. If you would rather have the shortcuts installed elsewhere, you can customize these options to suit your preferences. When you have made your shortcut choice, click "NEXT" to continue.

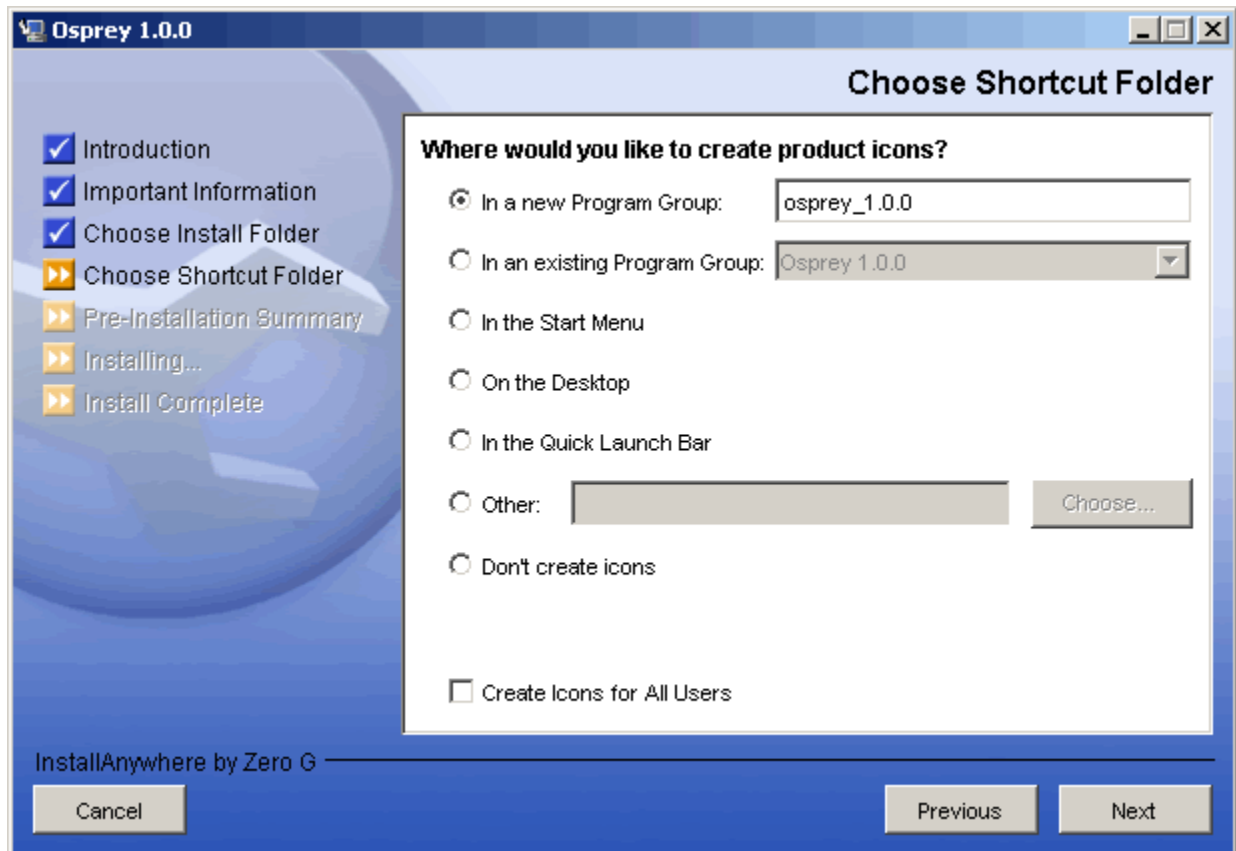


Figure 2.2 - 6: Osprey Installation Choose Shortcut Folder page

6) The next page will outline the options you have selected in a pre-installation summary. Please review the information, and ensure that everything is correct, and click "NEXT" to continue.

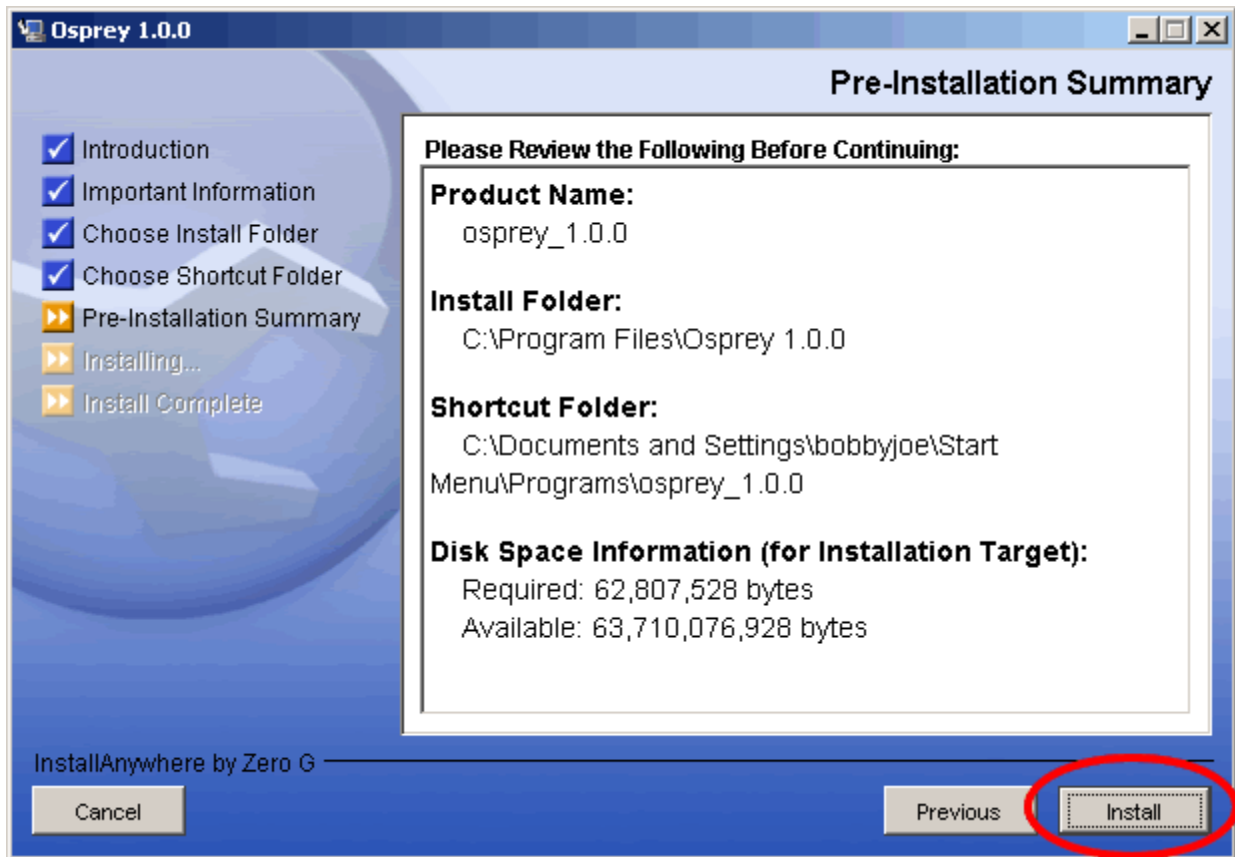


Figure 2.2 - 7: Osprey Pre-Installation Summary

7) The Osprey install will now copy all of the files needed to run Osprey. This process will take only a few minutes to run.

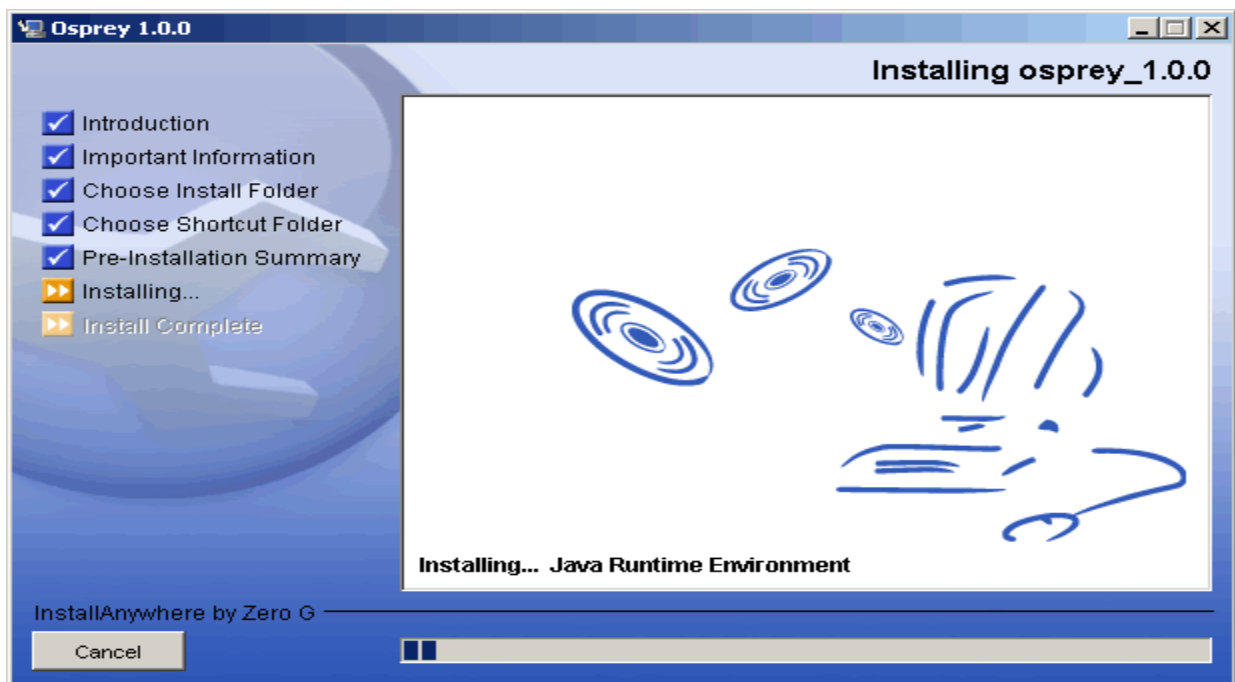




Figure 2.2 - 8: Osprey install progress copying files to your computer

8) Now the Osprey installation is complete. Click on the "DONE" button to finish the install and close the Osprey installer.

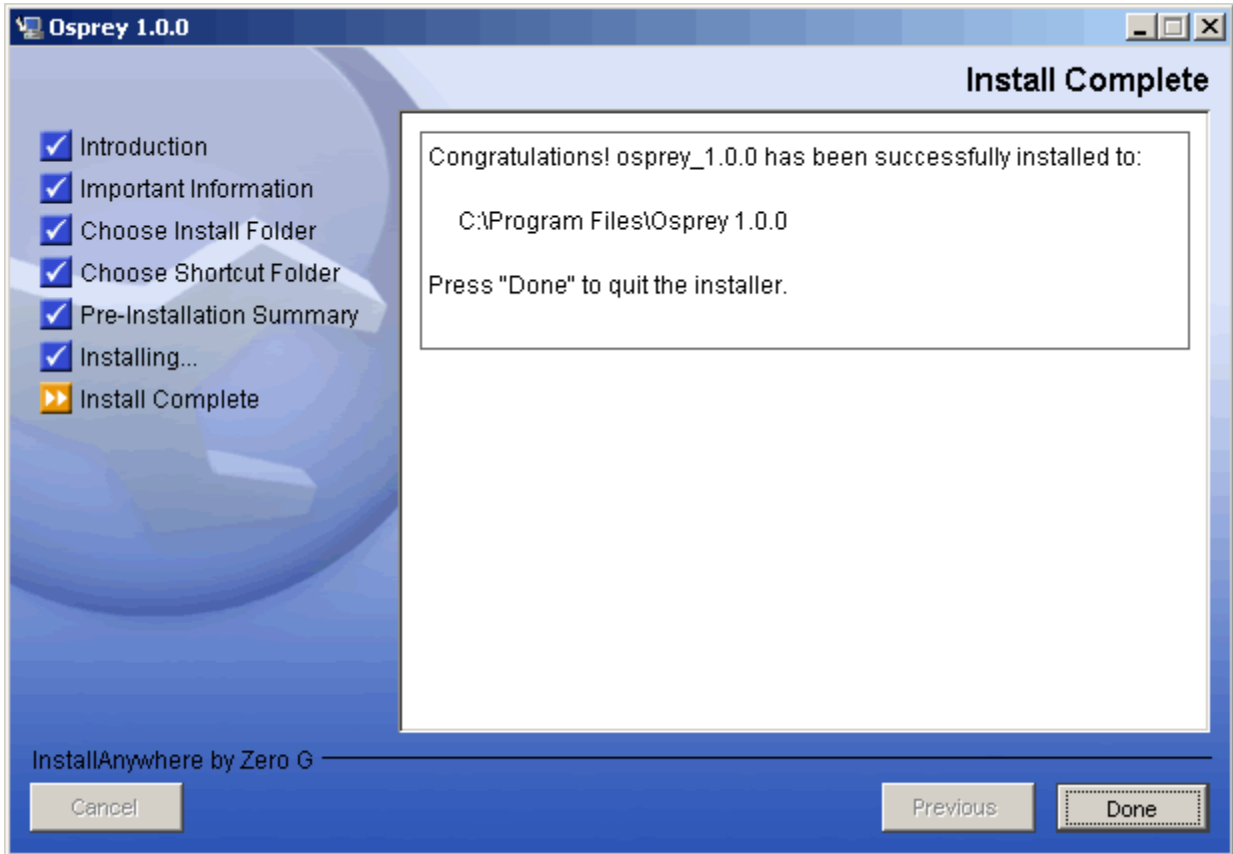


Figure 2.2 - 9: Osprey Install Complete